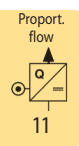


Miniature Piezo Proportional Flow Valve, 7 mW

PV630 / PV631

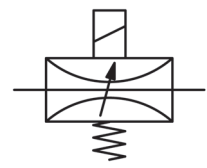


Description

The piezo miniature flow valve is highly reliable and combines precise control of flow rates with power consumption under 7 mW. It is extremely compact and weighs only 23 g. Therefore, it is very suitable for battery-operated portable devices.

Media
Flange connection
Operating pressure
Supply voltage
Electrical connector
Note
Life cycle
Power consumption
Response time
Mounting position
Material

Preferred application in medical engineering. Electronics are not necessary.
 50 µm filtered compressed air or non-corrosive gases
 according to CNOMO E06.36.120N (15 x 15 mm) or CNOMO E06.05.80 (30 x 30 mm) with adapter see chart, max. 8 bar
 0...40 V DC, residual ripple < 10%, without reverse voltage protection
 plug, contact gap 9.4 mm, 3-pin, with coupling socket (Pg 7P), optionally with wire, red (+), black (-)
 The current is to be limited by a > 30 Ω resistor connected in series.
 < 1 billion switching cycles at 6 bar
 < 100 µA, i.e. 7 mW
 50 ms
 any
 Body: PPS plastic
 Inner valve: piezoelectric ceramics
Switch-on consumption 0.6 W
Protection class IP 65 with coupling socket
Temperature range 0 °C to 60 °C / 32 °F to 140 °F
 Elastomer: NBR/Buna-N
 Manifold block: brass (M5), zinc die-cast (G½), polyamide (Ø)



DN 0.3 and 0.4
piezo-controlled, 7 mW

Description	Dimensions			K _v value (m ³ /h)	Flow rate l/min*1	Operating pressure max. bar	Nominal size DN	Order number
	A mm	B mm	C mm					

Flow valve	flangeable, without manifold block, with coupling socket, 0...40 V DC						PV630	
	NC	15	48	51	0.005	0...6		8
				0.006	0...7	4	0.4	PV630-04
NO	15	48	51	0.005	0...6	8	0.3	PV631-03
				0.006	0...7	4	0.4	PV631-04

Special options, add the appropriate letter

w/o coupling socket	protection class IP 00	PV63.-0.X
with wire	length 1 m, red (+), black (-)	PV63.-0.L

Accessories, enclosed

manifold block	M5	AP-01
	G½	AP-02
	Ø4	AP-03
	Ø4	AP-04
in-line manifold block	Ø4	AP-05
	G½	



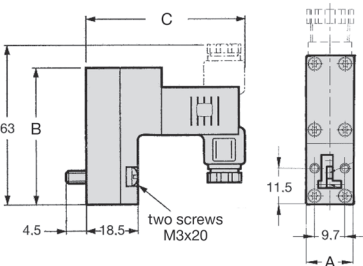
PV630-04



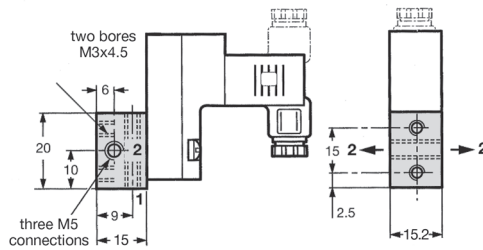
PV630-03L with wire



PV630-04 accessory: manifold block M5

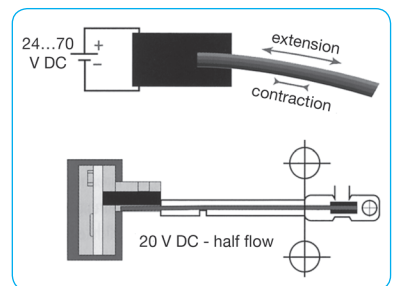


PV630

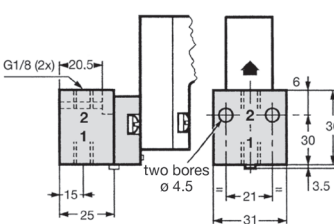


AP-01

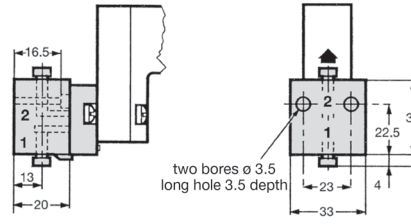
1: inlet
2: outlet



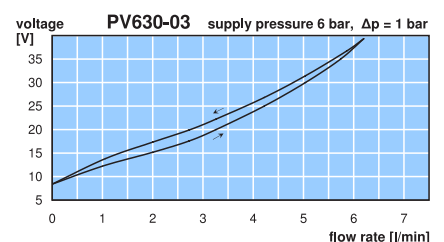
functional principle



AP-02



AP-03



*1 at operating pressure 6 bar and Δp = 1 bar

More miniature valves: see catalogue MV, also in ATEX version

PDF CAD
www.aircom.net

Order example:
PV630-03